

# FLOOR PLANS



SALES@UMTHUNZIPROPERTY.CO.ZA | 060 611 6878

## FACTS & FEATURES

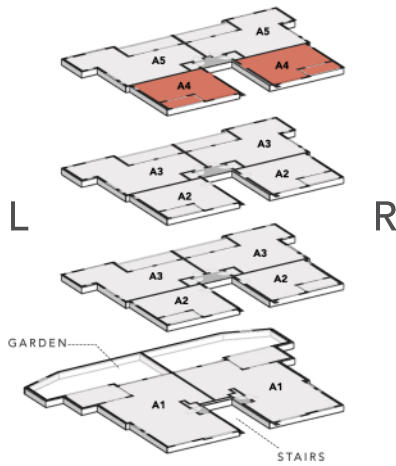
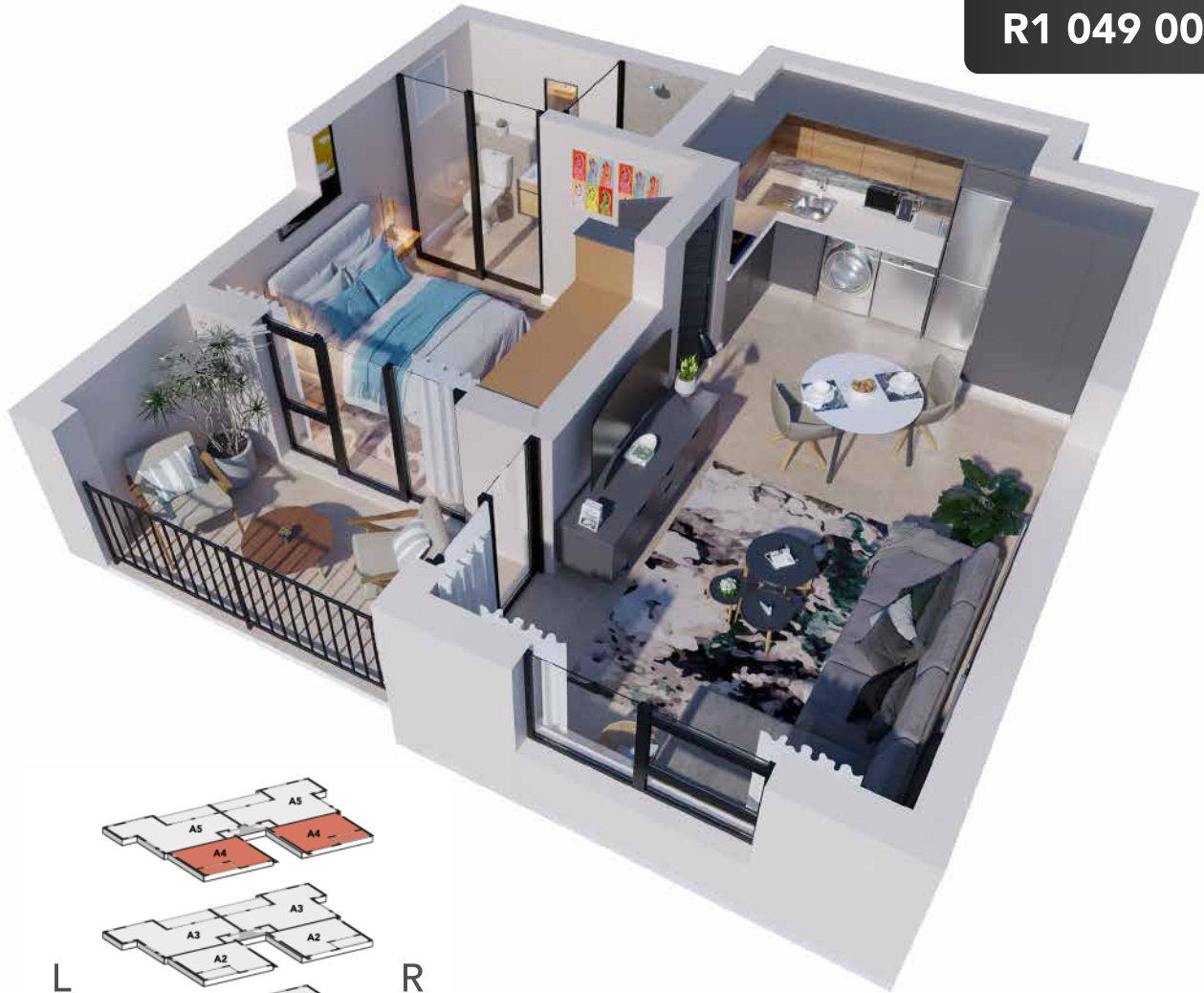
### THE DEVELOPMENT

- Fibre Ready
- Prepaid Metering
- Communal Solar Power
- Clubhouse, Pool & Amenities
- High-End Security
- Green Spaces & Walking Paths
- No Transfer Fees or Duties

### EXTRAORDINARY FINISHES

- High-end modern kitchens with stone tops & designer cupboards
- Bosch Appliances Included (Stove, hob, washing machine, dishwasher & fridge)
- Stylish bathrooms with quality finishes
- High quality porcelain tiles
- Built-in luxury cupboards in each bedroom
- Well thought out and designed interior spaces

BUY ONLINE TODAY!



**AREA SCHEDULE**

UNIT SIZE	48m <sup>2</sup>
COVERED PATIO SIZE	7m <sup>2</sup>
COVERED PARKING BAYS	1
<b>TOTAL UNIT SIZE</b>	<b>55m<sup>2</sup></b>

**UNIT FEATURES INCLUDE:**

- Open Plan Designer Kitchen with stone tops
- Bosch fridge, oven & hob, dishwasher and washing machine included
- High quality bathroom finishes
- DSTV & High-speed fibre internet ready



